

Nihon Motorcycle Company

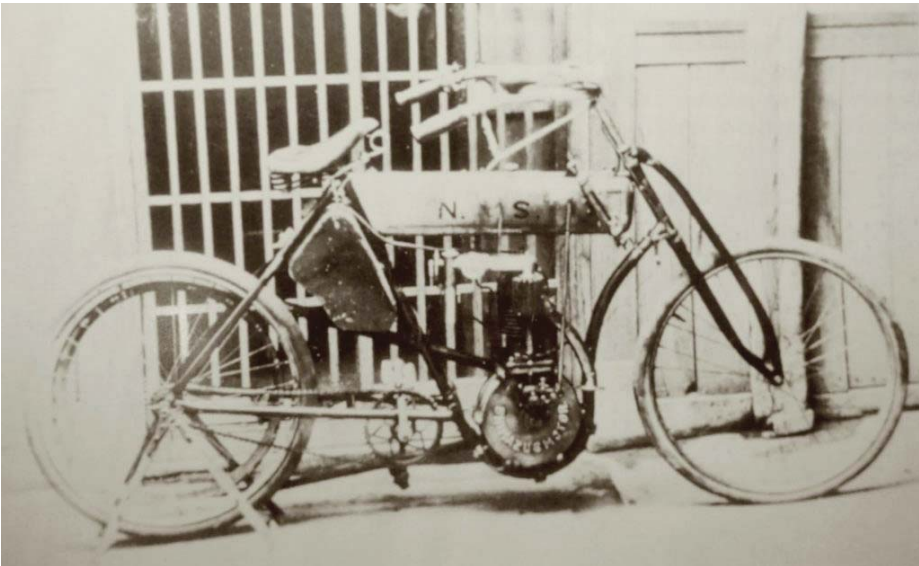
The NS motorcycle made by Narazo Shimazu in 1909, was the first motorcycle to be designed, built and sold in Japan. Shimazu created the Nihon Motorcycle Company (NMC) to manufacture the NS. In 1926 he then produced another new motorcycle design, the Arrow

“In 1903, his father bought Narazo Shimazu a bicycle. That same year he was fascinated by the news of the motorcycle. He went to Tokyo for races that had featured foreign owned Thomas (USA) and Gladiator (French) made motorcycles.

In 1908 at the age of 20 Shimazu established the Shimazu Motor Research Institute. In 1908 Shimazu created a twostroke motorcycle engine of 400 cc capacity and by December he had fitted this engine into a bicycle frame he had purchased for that purpose.

In 1909 he completed the construction of a four-cycle engine of his own design, and built a frame by reusing material from old bicycles. This was the first motorcycle manufactured in Japan, and Shimazu built a total of twenty of these, which he put his initials "NS" on. Customers were disappointed that the motorcycles he made often broke under their own weight while traveling on the primitive roads of that era.

In 1926 Shimazu completed a new motorcycle design called the Arrow First, and promoted it by taking four of the new motorcycles



on a cross-country journey from Kagoshima to Tokyo. Later in the year Shimazu went into bankruptcy, but then helped found a new company, Japan Motors Manufacturing, in Osaka and worked to improve the Arrow First. The new company produced a motorcycle with an air-cooled fourstroke side valve design engine of 250 cc capacity and a two-speed transmission. Production reached 50 to 60 machines a month and eventually totaled over 700 machines in three years.

However, no actual example exists any longer, and only a documentary record remains.



STAINLESS STEEL VINTAGE AND VETERAN PARTS

INVERTED LEVERS
BOWDEN LEVERS
INDIAN LEVERS
BEST & LLOYD FILLER CAPS
REPRO P&H HORNS
COMBINED AIR/THROTTLE LEVERS
MAGNETO LEVERS
FULL RANGE OF PILGRIM PUMP PARTS



For catalogue & price list contact

CHAS LIPSCOMBE 0402 751 132

chas61sarah @ gmail.com

